

CAT FEDERATION OF SOUTHERN AFRICA



STANDARD OF POINTS (Patterns and Colours)

Date of issue: November 2008

Revision date: March 2018

<u>PATTERNS</u>	<u>COLOURS</u>	<u>PAGE</u>
SELF	WHITE, BLACK, BLUE, CREAM, RED, CHOCOLATE, FAWN, LILAC, CINNAMON, CARAMEL, APRICOT	3
TORTOISESHELL	BLACK, BLUE, CHOCOLATE, LILAC, FAWN, CINNAMON, CARAMEL	4
PATCHED	BI-COLOUR, HARLEQUIN, VAN	5
	POINTED BI-COLOUR, HARLEQUIN, VAN	5
	COLOURS: SELF AND TABBY	6 - 7
	COLOURS: TORTIE TABBY, SILVER TABBY, SMOKE / SHADED / SHELL	7
SILVER	SMOKE – SELF & TORTIE	8
	SHADED / SHELL & COLOURS	9
GOLDEN	SHADED / SHELL	10
HIMALAYAN POINTED	SELF COLOURS	11
	TORTIE COLOURS	12
	TABBY COLOURS	13
	TORTIE TABBY	14 - 16
TABBY PATTERNS	CLASSIC	17
	MACKEREL	18
	SPOTTED	19
	TICKED	20
	MARBLE (Oriental only)	21
TABBY COLOURS	SOLID	22
	TORTIE TABBY	22
	SILVER, GOLDEN	23
TONKINESE COLOURS	SOLID	24
	TORTOISESHELL MINK	24
	TABBY MINK	25
	TORTOISESHELL TABBY MINK	26

SELFS

Having a coat of uniform colour and plain pattern.

All colours should exhibit an evenness of colour and be solid to the roots.

Allowance is made for slightly lighter shades underneath.

<u>COLOUR</u>	<u>COAT</u>	<u>NOSE LEATHER</u>	<u>PADS</u>
WHITE	Pure white without markings or shading of any kind. <i>Yellow or brown staining undesirable.</i> <i>Kittens often have coloured hairs on the head and this should not be penalised.</i>	Pink	Pink
BLACK	Lustrous Black, sound and even in colour, free from rustiness, white hairs or other markings.	Black or dark brown	Black or dark brown
BLUE	All shades of blue-grey, sound and even in colour, free from white hairs, shading or other markings.	Blue-grey	Blue-grey
CHOCOLATE	All shades of warm brown (Chocolate) accepted. Sound in colour, free from white hair or other markings. No grey undercoat	Chocolate	Cinnamon to Chocolate
LILAC	Faded lilac, warm in tone. Sound in colour, free from white hair or other markings.	Faded Lilac	Faded Lilac
FAWN	Warm rosy-mushroom	Pinkish-fawn	Pink or Pinkish-fawn
RED	Deep rich red, sound and even. <i>Freckles and slight tabby markings permissible.</i>	Deep Pink	Deep Pink
CREAM	Pale to medium cream, no warm tones. Sound and even. <i>Freckles and slight tabby markings permissible.</i>	Pink	Pink
CINNAMON	Warm cinnamon-brown.	Cinnamon	Cinnamon-brown to Pink
CARAMEL	Brownish-grey.	Pinkish-grey	Pinkish-grey
APRICOT	Hot sandy cream with a soft metallic sheen, which becomes more noticeable with maturity. Even and solid to the roots and as free from tabby markings as possible. Allowances: Freckles may appear on the nose leather, lips, eyelids, ears, and paws. <i>Slight freckling in adults and ghost tabby markings permissible.</i> <i>Faults: Excessive tabby markings in coat.</i>	Pink	Pink

TORTOISESHELL

Colour patched and/or intermingled with varying shades of red/cream.

Both colours should be clear, bright and well distributed over the whole body.

A blaze in red/cream on the face desirable but not required.

Kittens often have a grey undercoat and allowance should be made for this.

<u>COLOUR</u>	<u>COAT</u>	<u>NOSE LEATHER</u>	<u>PADS</u>
BLACK	Black patched or intermingled with varying shades of red.	Black or Dark brown and/or Pink	Black or Dark brown and/or Pink
BLUE	Blue-grey patched or intermingled with varying shades of cream.	Blue-grey and/or Pink	Blue-grey and/or Pink
CHOCOLATE	Chocolate patched or intermingled with varying shades of red.	Chocolate or Cinnamon and/or Pink	Chocolate or Cinnamon and/or Pink
LILAC	Faded Lilac patched or intermingled with varying shades of cream.	Faded Lilac and/or Pink	Faded Lilac and/or Pink
CARAMEL	Brownish grey patched or intermingled with varying shades of apricot.	Pinkish grey and/or Pink	Pinkish grey and/or Pink
CINNAMON	Warm Cinnamon brown patched or intermingled with varying shades of red.	Cinnamon and/or Pink	Cinnamon and/or Pink
FAWN	Warm Mushroom patched or intermingled with varying shades of cream.	Pinkish Fawn and/or Pink	Pinkish fawn and or Pink

PATCHED (Revised February 2017)

BI-COLOURS

Any recognized colour and white.

The colour patches must be clearly separated from each other, even in colour and harmoniously distributed.

The white portion of the cat's coat must be greater than 20% but no more than 50%.

A white blaze on the face is desirable.

White on the back is desirable.

There must be white on the legs, on the chest, stomach and the face between the top jaw and the top of head.

No single white hairs in the solid parts.



HARLEQUIN

All recognised coloured patches and white.

Patches to be clear, even and well distributed.

The white portion of the cat's coat must be greater than 51% but no more than 89%.

Face patched with colour and white.



VAN

A predominantly white cat with colour patches on head and a coloured tail.

Small coloured patches elsewhere acceptable.

The white portion of the cat's coat must be greater than 90%.

Chest and stomach must be white.



POINTED BICOLOUR/HARLEQUIN/VAN

Pointed and white is identical to that of the non-bicolour standard, except that patches of white are required.

The non-white parts of the cat vary from the intense expression of colour on the points to a paler manifestation of that colour on the body. The face and body should exhibit substantial white. On the body, the white will show most commonly on the legs, chest, undersides, shoulders and various spots on the body. There must be some white on the face.

Small spots of colour are allowed within the white, both on the face and the body. Ideally, the nose leather patches of white should occur in all points, with exception of the tail, which should preferably be solid.

The nose leather and pads follow the standard, except where patches of white occur near in the coat, the nose leather and pad pigmentation will be pink.

PATCHED SELF COLOURS

<u>COLOUR</u>	<u>COAT</u>	<u>NOSE LEATHER</u>	<u>PADS</u>
BLACK	Black & White	Black or Dark Brown and/or Pink	Black or Dark Brown and/or Pink
BLUE	Blue & White	Blue-grey and/or Pink	Blue-grey and/or Pink
CHOCOLATE	Chocolate & White	Chocolate or Cinnamon and/or Pink	Chocolate or Cinnamon and/or Pink
LILAC	Faded Lilac & White	Faded Lilac and/or Pink	Faded Lilac and/or Pink
CINNAMON	Warm Cinnamon & White	Cinnamon and/or Pink	Cinnamon and/or Pink
CARAMEL	Brownish-grey & White	Pinkish-grey and/or Pink	Pinkish-grey and/or Pink
FAWN	Warm Rosy Mushroom & White	Pinkish-fawn and/or Pink	Pinkish-fawn and/or Pink
RED	Red & White	Pink	Pink
CREAM	Cream & White	Pink	Pink
APRICOT	Apricot patched with white. Any large areas of apricot may show some barring.	Pink	Pink

PATCHED TORTOISESHELL (Revised February 2017)

Base colour patched with varying shades of red or cream and white. All three colours to be represented in clear even well distributed patches. In large areas of red or cream barring is permitted.

PATCHED TORTOISESHELL COLOURS

<u>COLOUR</u>	<u>COAT</u>	<u>NOSE LEATHER</u>	<u>PADS</u>
BLACK	Black patched with varying shades of red and white.	Black or Dark Brown and/or Pink	Black or Dark Brown and/or Pink
BLUE	Blue patched with varying shades of cream and white.	Blue-grey and/or Pink	Blue-grey and/or Pink
CHOCOLATE	Chocolate patched with varying shades of red and white.	Chocolate or Cinnamon and/or Pink	Chocolate or Cinnamon and/or Pink
LILAC	Faded Lilac patched with varying shades of cream and white.	Faded Lilac and/or Pink	Faded Lilac and/or Pink
CINNAMON	Cinnamon patched with varying shades of red and white.	Cinnamon and/or Pink	Cinnamon and/or Pink
CARAMEL	Caramel patched with varying shades of apricot and white.	Caramel and/or Pink	Caramel and/or Pink
FAWN	Fawn patched with varying shades of cream and white.	Fawn and/or Pink	Fawn and/or Pink

PATCHED TABBY COLOURS

<u>COLOUR</u>	<u>COAT</u>	<u>NOSE LEATHER</u>	<u>PADS</u>
BLACK TABBY	Black Tabby & White	Brick-red outlined with Black and/or Pink	Black or Dark Brown and/or Pink

BLUE TABBY	Blue Tabby & White	Old Rose outlined with Blue and/or Pink	Blue-grey and/or Pink
CHOCOLATE TABBY	Chocolate Tabby & White	Cinnamon outlined with Chocolate and/or Pink	Chocolate or Cinnamon and/or Pink
LILAC TABBY	Faded Lilac Tabby & White	Pink outlined with Faded Lilac and/or Pink	Faded Lilac and/or Pink
CINNAMON TABBY	Warm Cinnamon Tabby & White	Pink outlined with Cinnamon and/or Pink	Cinnamon and/or Pink
CARAMEL TABBY	Brownish-grey Tabby & White	Pink outlined with Caramel and/or Pink	Caramel and/or Pink
FAWN TABBY	Warm Rosy Mushroom Tabby & White	Pink outlined with Fawn and/or Pink	Fawn and/or Pink
RED TABBY	Red Tabby & White	Pink	Pink
CREAM TABBY	Cream Tabby & White	Pink	Pink
APRICOT TABBY	Apricot tabby patched with white.	Pink	Pink

PATCHED TORTOISESHELL TABBY COLOURS

<u>COLOUR</u>	<u>COAT</u>	<u>NOSE LEATHER</u>	<u>PADS</u>
BLACK TORTIE TABBY	Black Tortie Tabby & White	Brick-red outlined with Black and/or Pink	Black or Dark Brown and/or Pink
BLUE TORTIE TABBY	Blue Tortie Tabby & White	Old Rose outlined with Blue and/or Pink	Blue-grey and/or Pink
CHOCOLATE TORTIE TABBY	Chocolate Tortie Tabby & White	Cinnamon outlined with Chocolate and/or Pink	Chocolate or Cinnamon and/or Pink
LILAC TORTIE TABBY	Lilac Tortie Tabby & White	Pink outlined with Faded Lilac and/or Pink	Faded Lilac and/or Pink
CINNAMON TORTIE TABBY	Cinnamon Tortie Tabby & White	Pink outlined with Cinnamon and/or Pink	Cinnamon and/or Pink
CARAMEL TORTIE TABBY	Caramel Tortie Tabby & White	Pink outlined with Caramel and/or Pink	Caramel and/or Pink
FAWN TORTIE TABBY	Fawn Tortie Tabby & White	Pink outlined with Fawn and/or Pink	Fawn and/or Pink

PATCHED SILVER TABBY

Ground colour pale silver.

Markings as for corresponding non-silver tabby variety.

Nose Leather as for corresponding non-silver tabby variety.

Pads as for corresponding non-silver tabby variety.

COLOURS:

Black, Blue, Chocolate, Lilac, Red, Cream, Cinnamon, Caramel, Fawn, Apricot

Black Tortie, Blue Tortie, Chocolate Tortie, Lilac Tortie, Cinnamon Tortie, Caramel Tortie, Fawn Tortie

PATCHED SMOKE /SHADED /SHELL

Coat coloured same colour as for variety without white patched with white

Nose leather as for corresponding variety without white or pink

Pads as for corresponding variety without white or pink

COLOURS:

Black, Blue, Chocolate, Lilac, Red, Cream, Cinnamon, Caramel, Fawn, Apricot

Black Tortie, Blue Tortie, Chocolate Tortie, Lilac Tortie, Cinnamon Tortie, Caramel Tortie, Fawn Tortie

SILVER

SMOKE

A smoke is a cat of contrast.

The coat gives the appearance of a solid coloured cat, but when the fur is parted the white undercoat is revealed.

Ground colour ash white with approximately two thirds (2/3) of the tips shading to the appropriate colour



Darker points must be defined on back, head, legs, feet and tail. Ruff, sides, flanks, underparts and ear tufts pale silver.

Undercoat as white as possible.

A smoke cat without tabby markings is preferred.

<u>COLOUR</u>	<u>COAT</u>	<u>NOSE LEATHER</u>	<u>PADS</u>
BLACK	Black tipped	Black or Dark Brown	Black or Dark Brown
BLUE	Blue-grey tipped	Blue-grey	Blue-grey
CHOCOLATE	Chocolate tipped	Chocolate	Cinnamon to Chocolate
LILAC	Lilac tipped	Faded Lilac	Lavender
RED	Red tipped	Pink	Pink
CREAM	Cream tipped	Pink	Pink
CINNAMON	Cinnamon tipped	Cinnamon	Cinnamon
CARAMEL	Caramel tipped	Pinkish-grey	Pinkish-grey
FAWN	Warm beige fawn tipped	Pinkish-fawn	Pinkish-fawn
APRICOT	Hot sandy cream tipped with a soft metallic sheen.	Pink	Pink

SMOKE TORTIE

Ground colour as ash white as possible, tips shading to appropriate colour patched or mingled with varying shades of red or cream.

With or without facial blaze.

Undercoat as white as possible, ruff, ear tufts, flanks and underparts white.

<u>COLOUR</u>	<u>COAT</u>	<u>NOSE LEATHER</u>	<u>PADS</u>
BLACK	Tipping Black and Red	Black or Dark Brown and/or Pink	Black or Dark Brown and/or Pink
BLUE	Tipping Blue and Cream	Blue and/or Pink	Blue and/or Pink
CHOCOLATE	Tipping Chocolate and Red	Chocolate and/or Pink	Chocolate and/or Pink
LILAC	Tipping Lilac and Cream	Faded Lilac and/or Pink	Lilac and/or Pink
CINNAMON	Tipping Cinnamon and Red	Cinnamon Brown and/or Pink	Cinnamon and/or Pink
CARAMEL	Tipping Caramel and Apricot	Pinkish-grey and/or Pink	Pinkish-grey and/or Pink
FAWN	Tipping Warm Fawn and Cream	Pinkish-fawn and/or Pink	Pinkish-fawn and/or Pink

SHADED / SHELL

Tipping as even as possible.

Coat on head, ears, back, flanks and upper side of tail tipped with colour.

Chin, ear tufts, chest and stomach, inside of legs and underside of tail without tipping.

Undercoat white

Eyes and nose leather outlined with colour of tipping.

Faults: Uneven tipping.

All tabby markings

Brown or yellowish tinges in coat

SHADED

Coat evenly shaded with the appropriate colour giving an overall effect of a mantle.

Approximately one third of hair shaft to be coloured from tip



Deepest colour confined to mask, along back and on legs and feet

Legs shaded with colour

SHELL

Coat evenly tipped with the appropriate colour to give the characteristic sparkling appearance

Only the extreme tip of hair shafts, approximately 1/8, are coloured.



Legs may be very slightly shaded with tipping

<u>COLOUR</u>	<u>COAT</u>	<u>NOSE LEATHER</u>	<u>PADS</u>
BLACK	Black tipped	Brick Red	Black or Dark Brown
BLUE	Blue-grey tipped	Old Rose	Blue-grey
CHOCOLATE	Chocolate tipped	Chocolate	Cinnamon to Chocolate
LILAC	Lilac tipped	Faded Lilac	Lavender
RED	Red tipped	Pink	Pink
CREAM	Cream tipped	Pink	Pink
CINNAMON	Cinnamon tipped	Cinnamon-brown	Cinnamon
CARAMEL	Brownish-grey tipped	Pinkish-grey	Pinkish-grey
FAWN	Warm beige fawn tipped	Pinkish-fawn	Pinkish-fawn
APRICOT	Undercoat as white as possible. Tipping apricot.	Pink	Pink

Tortie Shaded / Shell description as for smoke.

Colours: Black, Blue, Chocolate, Lilac, Cinnamon, Caramel, Fawn

GOLDEN (Revised February 2017)

SHADED BLACK

COAT	Undercoat varies from apricot to gold with seal brown or black tipping on head, back, flanks and tail. General tipping effect much darker than a chinchilla. Legs may be shaded, back of legs from paws to hock solid brown or black. Tipping on tail heavier than body tipping.
EYES	Green or Blue-green, outlined with Seal-brown or Black.
NOSE LEATHER	Brick-red outlined with Seal-brown or Black.
PADS	Seal-brown or Black.
FAULTS	Barring on body and legs in adults. White chin Coat too pale or grey in tone Grey undercoat Solid coloured hairs Uneven tipping

SHADED BLUE

COAT	Undercoat varies from warm deep ivory to honey with a mantle of blue-grey tipping. Shading down from the head, ears, back, flanks and upper side of tail. Ground colour more intense on face and back with a lighter shade on the chin, ear tufts, down the flanks, the belly and underside of tail. Whisker pads, chin and chest maybe light to deep cream. Chin, ear tufts, chest and belly, inside of legs and underside of tail must be without tipping. The fur on the underside of the feet is blue-grey. Back of hind feet blue-grey from paw to hock.
EYES	Green or Blue-green outlined with blue-grey
NOSE LEATHER	Old rose outlined with blue-grey
PADS	Blue-grey or pinkish blue-grey
FAULTS	Barring on body and legs in adults. White chin Coat too cold Grey undercoat Solid coloured hairs Uneven tipping

SHELL BLACK

COAT	Undercoat light apricot evenly tipped with seal-brown or black to give a sparkling appearance.
-------------	--

All other details as for Golden Shaded

SHELL BLUE

COAT	Undercoat varies from warm deep ivory to honey tipped on head, back, flanks and tail with even blue-grey tipping to enhance the golden appearance Face and legs slightly tipped with blue-grey. In general, a Golden Shell Blue appears to be much lighter than the Golden Shaded Blue
-------------	--

All other details as for Golden Shaded

HIMALAYAN POINTED

SELF

Points (Mask, Ears, Legs, Feet, Tail) dense and matching in colour, showing clear contrast between points and body colour.

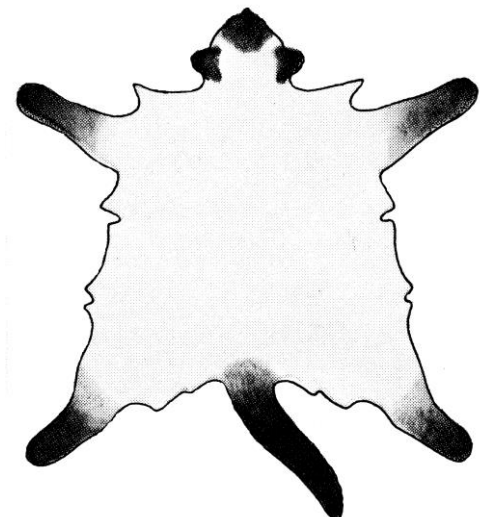
Mask must not extend over the entire head and is connected to the ears by tracings of colour.

Shading on the body harmonizing with the point colour permissible

Note: A deeper body colour is allowed in older cats.

Belly spot undesirable

Eye Colour: Clear Blue



POINTED COLOURS

EYE COLOUR – CLEAR BLUE

<u>COLOUR</u>	<u>BODY COLOUR</u>	<u>POINTS</u>	<u>NOSE LEATHER / PADS</u>
SEAL	Cream or pale warm fawn. Grey shades a fault.	Dense seal-brown	Dark seal-brown
BLUE	Bluish-white, cold in tone. Warm fawn tones a fault.	Blue-grey, without brownish tinges	Blue-grey
CHOCOLATE	Ivory	Chocolate. Legs may be paler than other points.	Chocolate or Cinnamon.
LILAC	Off-white (Magnolia).	Lilac with a slight pinkish tone.	Faded Lilac
RED	Off-white. Shading on body and legs may be apricot. <i>Allowance should be made for barring on points and freckling on mature cats.</i>	Bright warm orange.	Pink
CREAM	Off-white. <i>Allowance should be made for barring on points and freckling on mature cats.</i>	Cream. Legs and feet may be paler.	Pink
CINNAMON	Ivory, shading to tone with points.	Warm cinnamon-brown. Legs may be paler.	Cinnamon-brown
FAWN	Off-white (Magnolia)	Warm pale rosy mushroom. Legs may be paler.	Pinkish fawn
CARAMEL	Off-white (Magnolia)	Brownish-grey. Legs may be paler.	Pinkish grey

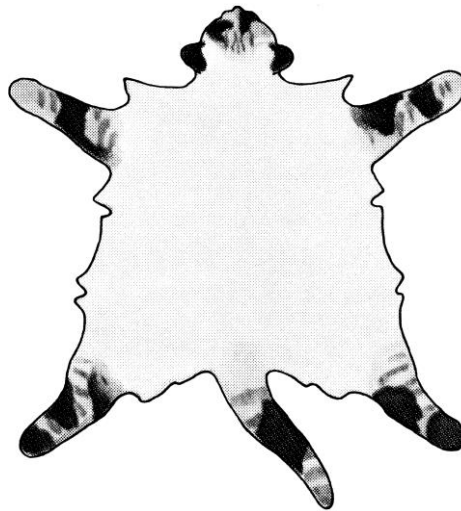
APRICOT	Off-white. Shading if any to tone with the points.	Hot cream with a soft metallic sheen. The legs and feet may be slightly paler than the other points.	Pink
---------	--	--	------

TORTIE POINT

Points patched or intermingled with varying shades of red and cream. Body shading to harmonize with point colours.

Points need not be evenly broken but each point must show some break in colour.

Blaze may be present.



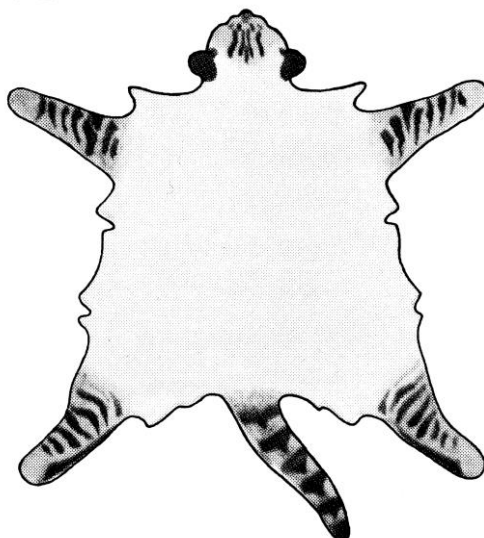
TORTIE POINT COLOURS

EYES – CLEAR BLUE

<u>COLOUR</u>	<u>BODY COLOUR</u>	<u>POINTS</u>	<u>NOSE LEATHER / PADS</u>
SEAL	Beige shading to fawn.	Seal with red	Seal and/or Pink
BLUE	Bluish-white.	Blue-grey with cream	Blue and/or Pink
CHOCOLATE	Ivory	Chocolate with red.	Chocolate and/or Pink
LILAC	Off-white (Magnolia).	Faded Lilac with cream	Faded Lilac and/or Pink
CINNAMON	Ivory	Warm cinnamon-brown with red.	Cinnamon-brown and/or Pink
FAWN	Off-white (Magnolia)	Warm pale rosy mushroom with cream.	Pinkish fawn and/or Pink
CARAMEL	Off-white (Magnolia)	Brownish-grey with apricot.	Pinkish grey and/or Pink

TABBY POINT

MASK	"M" on forehead. Spectacles around eyes. Spotted whisker pads.
EARS	Solid colour with thumbprint.
BODY	Shading to tone with points.
LEGS	Broken stripes on all legs. Solid colour on back feet.
TAIL	Ringed, ending in a solid tip.



TABBY POINT COLOURS

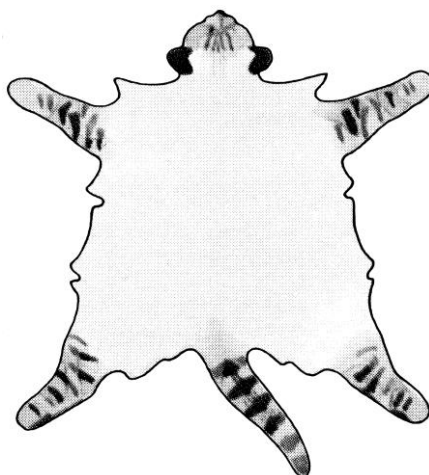
EYE COLOUR – CLEAR BLUE

<u>COLOUR</u>	<u>BODY COLOUR</u>	<u>POINTS</u>	<u>NOSE LEATHER</u>	<u>PADS</u>
SEAL	Cream	Dark Seal tabby	Brick-red outlined with seal.	Dark seal-brown
BLUE	Bluish-white	Blue-grey tabby	Old rose outlined with blue or blue-grey	Blue-grey
CHOCOLATE	Ivory	Chocolate tabby	Cinnamon-pink outlined with Chocolate	Chocolate or Cinnamon
LILAC	Off-white (Magnolia)	Lilac tabby	Lavender outlined with lilac	Faded Lilac
RED	Off-white	Warm orange tabby.	Pink	Pink
CREAM	Off-white	Cream tabby	Pink	Pink
CINNAMON	Ivory	Warm cinnamon tabby	Cinnamon-brown or Pink outlined with cinnamon-brown	Cinnamon-brown and/or Pink
FAWN	Off-white (Magnolia)	Warm rosy mushroom tabby	Pinkish fawn or Pink outlined with Pinkish-fawn	Pinkish-fawn and /or Pink
CARAMEL	Off-white (Magnolia)	Brownish-grey tabby	Pinkish grey or Pink outlined with Pinkish-grey	Pinkish-grey and/or Pink
APRICOT	Off-white	Clear hot cream with a soft metallic sheen tabby marking. Thumbprints may be less apparent	Pink	Pink

TORTIE TABBY POINT

As for Tabby Point except for ears and points which are mottled/patched with red/cream.

COLOURS: Seal, Blue, Chocolate, Lilac, Cinnamon, Fawn, Caramel



SILVER TABBY POINT COLOURS (only acceptable for Siberians)

EYE COLOUR – CLEAR BLUE

COLOUR	BODY COLOUR	POINTS	NOSE LEATHER	PADS
SEAL	Cream	Dark Seal tabby on a silver ground colour	Brick-red outlined with seal.	Dark seal-brown
BLUE	Bluish-white	Blue-grey tabby on a silver ground colour	Old rose outlined with blue or blue-grey	Blue-grey
RED	Off-white.	Warm orange tabby on a silver ground colour.	Pink	Pink
CREAM	Off-white.	Cream tabby on a silver ground colour.	Pink	Pink

SILVER TORTOISESHELL TABBY POINT COLOURS (only acceptable for Siberians)

COLOUR	BODY COLOUR	POINTS	NOSE LEATHER	PADS
SEAL	Cream	Dark Seal tabby patched or intermingled with red gold on a silver ground colour	Brick-red outlined with seal.	Dark seal-brown
BLUE	Bluish-white	Blue-grey tabby patched or intermingled with cream on a silver ground colour	Old rose outlined with blue or blue-grey	Blue-grey

GOLDEN TABBY POINT COLOURS (only accepted for Siberians)

EYE COLOUR – CLEAR BLUE

<u>COLOUR</u>	<u>BODY COLOUR</u>	<u>POINTS</u>	<u>NOSE LEATHER</u>	<u>PADS</u>
SEAL	Cream	Dark Seal tabby on a warm apricot ground colour	Brick-red outlined with seal.	Dark seal-brown
BLUE	Bluish-white	Blue-grey tabby on a warm oatmeal ground colour	Old rose outlined with blue or blue-grey	Blue-grey

CLASSIC TABBY (Page revised February 2011)

PATTERN

On the appropriate base colour is a “dark” and clearly defined pattern with good contrast without ticked hairs (brindling).

“M” on the forehead.

An unbroken line runs back from the outer corner of the eye (tracings).

Spiral on the cheeks.

Thumb print on the ears.

Unbroken necklaces on chest.

Vertical lines over the back of the head extend to the shoulder markings, which are in the shape of a butterfly.

Vertical line down spine from the butterfly to the base of the tail, with two parallel lines on each side.

These three lines are clearly separated from each other by the ground colour.

On each flank are large whorls in the colour of the ground colour encircled by one or more unbroken darker lines. Markings should be identical on both sides.

A double row of dark spots (buttons) on chest and stomach.

Legs are evenly barred.

The back of the feet in the dark colour.

The tail is evenly ringed and ends in a solid dark tip.

Faults: White chin or any white markings.

Indistinct or incorrect markings.

Light coloured tip of tail.

Blurred rings, broken necklaces or rings broken on top of tail.

Grey roots undesirable.



MACKEREL TABBY (Revised February 2011)

PATTERN

On the appropriate base colour is a dark and clearly defined pattern with a good contrast and without ticked hairs (brindling).

“M” on forehead. Spiral on cheeks.

Thumb print on ears.

Unbroken necklaces on chest.

An unbroken spine line runs from the head over the back to the base of the tail.

Numerous narrow dark lines run vertically down the body from the spine line to the stomach.

These lines to be clearly separated by the ground colour.

The pattern should be even on both sides.

A double row of dark spots (buttons) on the chest and stomach.

Legs evenly ringed.

Back of feet in dark colour.

Tail evenly ringed and ends in a solid dark tip.

Faults: White chin or any white markings.

Indistinct or incorrect markings.

Light coloured tip of tail.

Blurred rings, broken necklaces or rings broken on top of tail.

Grey roots undesirable.



SPOTTED TABBY

PATTERN

On the appropriate base colour is a clear pattern of numerous well-defined round or oval “dark” spots with good contrast and without ticked hairs (brindling).

The spots should be of uniform shape, the more numerous the better, they are as important as the colour. Scarab markings on the head with lines running between the ears and breaking into spots on the lower neck and shoulders.

“M” on the forehead.

Thumb print on ears.

Pencilling’s on the cheeks.

Whisker pads spotted.

Broken necklaces on chest.

Spots should be spread on the shoulders and over the body down to the legs.

A slight spine line permitted.

Stomach covered by clearly defined spots.

Legs evenly ringed and/or spotted.

Back of feet in dark colour.

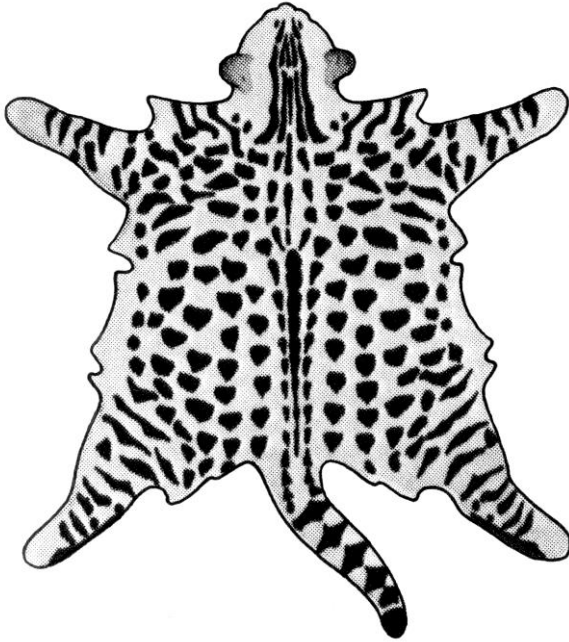
Tail evenly ringed and ends in a solid dark tip.

Faults: White, anywhere other than lips and lower jaw.

Spots elongated, resembling broken stripes.

Incorrect spotting pattern i.e. spots on one side and broken stripes on the other.

Solid spine line in adults.



TICKED TABBY

PATTERN

Body and extremities show pronounced ticking.

The body is free from any markings.

Tabby markings on face and forehead.

Thumb prints on ears.

One or two necklaces – broken or unbroken.

Darker spine line.

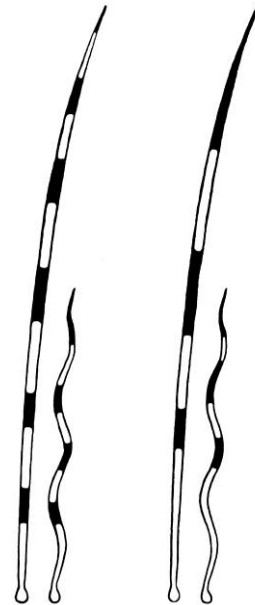
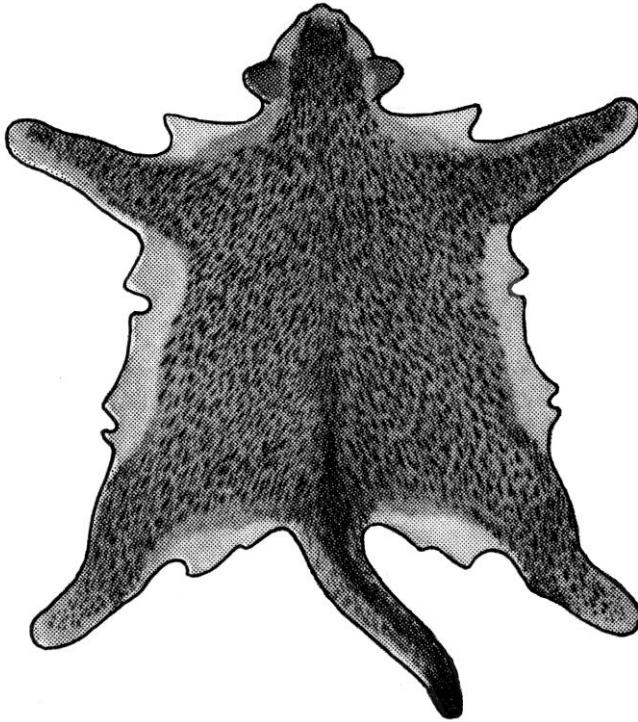
Fine, distinct stripes on legs.

Back of feet in the “dark” colour.

The tail is evenly ringed and ends in a solid dark tip.

Faults: White chin

Light coloured tail tip.



MARBLE TABBY (Added February 2017)

Marble should be uniquely different from the classic pattern. The side pattern is more rectangular than circular.

PATTERN

Thumbprints on back of ears

“M” on the forehead

Bars or whirls on the cheeks

Light coloured spectacles around eyes

Unbroken lines running from the outer corners of the eyes

Spotted whisker pads

Paler chin

Scarab marking on the head

Lines from scarab continue between the ears and down the back of neck to meet the pattern on the shoulders

Necklaces may be broken or unbroken

A distinct pattern of large swirled patches and blotches or horizontal streaks

Rosettes may appear on shoulders or rear quarters

3 or more shades are desirable in the pattern.

Contrast between the ground colour and pattern must be distinct.

Belly must be spotted.

Legs may be barred and or spotted.

Dark gauntlets on back of hind feet.

Ringed tail.

Tail ends in a dark tip.

Faults: Typical classic pattern

Belly not spotted

Light coloured tip of tail



TABBY COLOURS

SOLID

<u>COLOUR</u>	<u>COAT</u>	<u>NOSE LEATHER</u>	<u>PADS</u>
BLACK	Ground colour coppery brown. Markings dense black.	Brick-red outlined with black	Black or dark brown.
BLUE	Ground colour ivory. Markings deep blue.	Old rose outlined with blue	Blue-grey
CHOCOLATE	Ground colour pale chocolate. Markings chocolate brown.	Cinnamon-pink outlined with chocolate	Cinnamon to chocolate
LILAC	Ground colour pale beige. Markings lilac.	Pink outlined with lilac	Faded lilac
RED	Ground colour pale red. Markings deep red.	Pink outlined with red	Pink
CREAM	Ground colour pale cream. Markings deeper shade of cream.	Pink	Pink
CINNAMON	Ground colour apricot. Markings warm cinnamon.	Pink outlined with cinnamon-brown	Pinkish brown
FAWN	Ground colour dull pale beige. Markings beige/fawn.	Pink outlined with fawn	Pink
CARAMEL	Ground colour cool toned beige. Markings brownish grey.	Pink outlined with caramel	Pink
APRICOT	Ground colour pale cream. markings hot sandy cream with a soft metallic sheen	Pink	Pink

TORTIE TABBY COLOURS

<u>COLOUR</u>	<u>COAT</u>	<u>NOSE LEATHER</u>	<u>PADS</u>
BLACK	Ground colour any shade of true brown. Markings dense black patched or mingled with varying shades of red.	Brick-red outlined with black and/or Pink	Dark brown and/or Pink
BLUE	Ground colour ivory. Markings blue-grey patched or mingled with varying shades of cream.	Blue or old rose outlined with blue and/or Pink	Blue-grey and/or Pink
CHOCOLATE	Ground colour chocolate brown. Markings chocolate brown patched or mingled with varying shades of red.	Cinnamon-pink outlined with chocolate and/or Pink	Chocolate and/or Pink
LILAC	Ground colour pale beige. Markings lilac patched or mingled with varying shades of cream.	Pink outlined with lilac and/or Pink	Faded lilac and/or Pink
CINNAMON	Ground colour apricot. Markings warm cinnamon patched or mingled with varying shades of red.	Pink outlined with cinnamon and/or Pink	Cinnamon and/or Pink
FAWN	Ground colour dull beige. Markings beige/fawn patched or mingled with varying shades of cream.	Pink outlined with fawn and/or Pink	Fawn and/or Pink
CARAMEL	Ground colour cool toned beige. Markings brownish grey patched or mingled with varying shades of apricot.	Pink outlined with caramel and/or Pink	Caramel and/or Pink

SILVER TABBY

Ground colour pale silver.

Markings as for corresponding non-silver tabby variety.

Nose Leather as for corresponding non-silver tabby variety.

Pads as for corresponding non-silver tabby variety.

COLOURS:

Black, Blue, Chocolate, Lilac, Red, Cream, Cinnamon, Caramel, Fawn, Apricot

Black Tortie, Blue Tortie, Chocolate Tortie, Lilac Tortie, Cinnamon Tortie, Caramel Tortie, Fawn Tortie

GOLDEN TABBY

Ground colour warm, coppery brown.

Markings seal brown or black.

Nose Leather – Brick red outlined with seal brown or Black

Pads – Seal brown or Black

Eyes – Green or Blue-green outlined with seal or black.

TONKINESE COLOURS

Eye Colour: Pointed Pattern – Clear blue, Solid pattern – yellow to green, Mink pattern – any shade of bluish-green or greenish-blue

Mink Pattern

Solid Colours

Body colour should be rich, even and unmarked.

Mask, Ears, Feet and Tail – All dense and darker than the body but merging gently into body colour

Allowance to be made for lighter body colour and slight barring in young cats, especially in Red and Cream

Development may take up to 16 months for full coat colour.

<u>COLOUR</u>	<u>BODY</u>	<u>POINTS</u>	<u>NOSE LEATHER</u>	<u>PADS</u>
BROWN MINK	Warm brown	Dark chocolate	Dark brown	Brown
BLUE MINK	Bluish-grey	Slate blue	Blue-grey	Blue-grey
CHOCOLATE MINK	Warm beige	Pale brown	Cinnamon	Pinkish brown
LILAC MINK	Soft silver	Pewter-grey	Lavender	Lavender pink
RED MINK	Light red	Dark red	Pink	Pink
CREAM MINK	Pale cool toned cream	Dark cream	Pink	Pink
APRICOT MINK	Hot cream	darker hot cream points showing a fawn undertone, with a metallic sheen	Pink	Pink

Tortoiseshell Mink

The base colour should be well broken with varying shades of red or cream and free from tabby markings.

Allowances are to be made for large areas of red or cream that shows some tabby markings.

Distribution of colour on the points is immaterial. The base colour on the points should be darker than the base colour on the body and should match in tone although the legs and feet may be paler.

<u>COLOUR</u>	<u>BODY</u>	<u>POINTS</u>	<u>NOSE LEATHER</u>	<u>PADS</u>
BROWN TORTOISESHELL MINK	Warm brown with varying shades of red	Dark chocolate with varying shades of red	Dark brown and/or pink	Brown and/or pink
BLUE TORTOISESHELL MINK	Bluish-grey with varying shades of cream	Slate blue with varying shades of cream	Blue-grey and/or pink	Blue-grey and/or pink
CHOCOLATE TORTOISESHELL MINK	Warm beige	Pale brown with varying shades of red	Cinnamon and/or pink	Pinkish brown and/or pink
LILAC TORTOISESHELL MINK	Soft silver	Pewter-grey with varying shades of cream	Lavender and/or pink	Lavender pink and/or pink

Tabby Mink

The Tabby pattern may be Ticked, Mackerel, Spotted or Classic.

The points markings should show vivid contrast with the background colour but may be less contrasting in the dilute colours and may be paler on the legs than the other points. The colour of the markings on the points and body should match in tone. Markings may take longer to develop in Reds and Creams. The points do not merge with the body colour as they do in non-tabby patterns but the markings on the points should be darker than the markings on the body.

Body Markings

The markings will depend upon the nature of the tabby pattern but will appear as a lighter shade of the points markings against the agouti background colour. The markings will lighten down the flanks to the underparts, which will be a paler shade of the background colour and may show spots. The Tonkinese expression results in a broad band of more solid colour over the top of the head, along the back and into the base of the tail that is more noticeable with maturity. There should be one or more necklaces which may be broken or unbroken.

Point Colour

As for solid pointed colours, matching colour essential, but varied tones acceptable.

Head Markings

Clearly defined "M" on forehead, spectacles around eyes, eye tracings, spotted whisker pads, thumb prints on ears, nose leather outlined with appropriate colour.

Legs

Clearly defined broken stripes. Solid markings on the back of hind legs. Leg markings may be paler than other points.

Tail

Clearly defined broken rings.

<u>COLOUR</u>	<u>BODY</u>	<u>POINTS</u>	<u>NOSE LEATHER</u>	<u>PADS</u>
BROWN TABBY MINK	Ground colour beige with dark brown markings	Dark chocolate	Dark brown or brick red outlined in brown	Brown
BLUE TABBY MINK	Ground colour beige with bluish-grey markings	Slate blue	Blue-grey or pink outlined in blue-grey	Blue-grey
CHOCOLATE TABBY MINK	Ground colour warm beige with warm chocolate markings	Pale brown	Cinnamon or brick red outlined in chocolate	Pinkish brown
LILAC TABBY MINK	Ground colour magnolia with warm pewter grey markings	Pewter grey	Lavender or pink outlined in lavender	Lavender pink
RED TABBY MINK	Ground colour cool ivory with light red markings	Dark red	Pink	Pink
CREAM TABBY MINK	Ground colour pale cool toned cream with rich cream markings	Dark cream	Pink	Pink
APRICOT TABBY MINK	Hot cream body markings against a pale cream agouti background	darker tabby markings on the points	Pink	Pink

Tortoiseshell Tabby Mink

The base colour should be well broken with varying shades of red or cream tabby.

Distribution of colour on the points is immaterial. The base colour on the points should be darker than the base colour on the body and should match in tone although the legs and feet may be paler. Both elements of tortoiseshell and tabby must be present.

<u>COLOUR</u>	<u>BODY</u>	<u>POINTS</u>	<u>NOSE LEATHER</u>	<u>PADS</u>
BROWN TORTOISESHELL TABBY MINK	Dark brown tabby markings broken and overlaid with varying shades of red	Dark chocolate with varying shades of red	Dark brown or brick red outlined in brown and/or Pink	Brown and/or Pink
BLUE TORTOISESHELL TABBY MINK	Bluish-grey markings broken and overlaid with varying shades of cream	Slate blue with varying shades of cream	Blue-grey or pink outlined in blue-grey and or Pink	Blue-grey and/or Pink
CHOCOLATE TORTOISESHELL TABBY MINK	Warm chocolate markings broken and overlaid with varying shades of red	Pale brown with varying shades of red	Cinnamon or brick red outlined in chocolate and/or Pink	Pinkish brown and/or Pink
LILAC TORTOISESHELL TABBY MINK	Warm pewter grey markings broken and overlaid with varying shades of cream	Pewter-grey with varying shades of cream	Lavender or pink outlined in lavender and/or Pink	Lavender pink and/or Pink