



Cat Federation of Southern Africa

Standard of Points

PATTERNS AND COLOURS

SELFS

Having a coat of uniform colour and plain pattern.

All colours should exhibit an evenness of colour and be solid to the roots.

Allowance is made for slightly lighter shades underneath.

<u>COLOUR</u>	<u>COAT</u>	<u>NOSE LEATHER</u>	<u>PADS</u>
WHITE	Pure white without markings or shading of any kind. <i>Yellow or brown staining undesirable.</i> <i>Kittens often have coloured hairs on the head and this should not be penalised.</i>	Pink	Pink
BLACK	Lustrous Black, sound and even in colour, free from rustiness, white hairs or other markings.	Black or dark brown	Black or dark brown
BLUE	All shades of blue-grey, sound and even in colour, free from white hairs, shading or other markings.	Blue-grey	Blue-grey
CHOCOLATE	All shades of warm brown (Chocolate) accepted. Sound in colour, free from white hair or other markings. No grey undercoat	Chocolate	Cinnamon to Chocolate
LILAC	Faded lilac, warm in tone. Sound in colour, free from white hair or other markings.	Faded Lilac	Faded Lilac
RED	Deep rich red, sound and even. <i>Freckles and slight tabby markings permissible.</i>	Deep Pink	Deep Pink
CREAM	Pale to medium cream, no warm tones. Sound and even. <i>Freckles and slight tabby markings permissible.</i>	Pink	Pink
CINNAMON	Warm cinnamon-brown.	Cinnamon	Cinnamon-brown to Pink
CARAMEL	Brownish-grey.	Pinkish-grey	Pinkish-grey
FAWN	Warm rosy-mushroom	Pinkish-fawn	Pink or Pinkish-fawn

TORTOISESHELL

Colour patched and/or intermingled with varying shades of red/cream.

Both colours should be clear, bright and well distributed over the whole body.

A blaze in red/cream on the face desirable but not required.

Kittens often have a grey undercoat and allowance should be made for this.

<u>COLOUR</u>	<u>COAT</u>	<u>NOSE LEATHER</u>	<u>PADS</u>
BLACK	Black patched or intermingled with varying shades of red.	Black or Dark brown and/or Pink	Black or Dark brown and/or Pink
BLUE	Blue-grey patched or intermingled with varying shades of cream.	Blue-grey and/or Pink	Blue-grey and/or Pink
CHOCOLATE	Chocolate patched or intermingled with varying shades of red.	Chocolate or Cinnamon and/or Pink	Chocolate or Cinnamon and/or Pink
LILAC	Faded Lilac patched or intermingled with varying shades of cream.	Faded Lilac and/or Pink	Faded Lilac and/or Pink
CARAMEL	Brownish grey patched or intermingled with varying shades of cream.	Pinkish grey and/or Pink	Pinkish grey and/or Pink
CINNAMON	Warm Cinnamon brown patched or intermingled with varying shades of red.	Cinnamon and/or Pink	Cinnamon and/or Pink
FAWN	Warm Mushroom patched or intermingled with varying shades of cream.	Pinkish Fawn and/or Pink	Pinkish fawn and or Pink

PATCHED (Page revised February 2011)

BI-COLOURS

Any recognized colour and white. The colour patches must be clearly separated from each other, even in colour and harmoniously distributed.

At least $\frac{1}{2}$ must be coloured, but no more than $\frac{3}{4}$, the rest white.

A white blaze on the face is desirable. White on the back is desirable. There must be white on the legs, on the chest, face and stomach. No single white hairs in the solid parts.



HARLEQUIN

All recognised coloured patches and white. The Coloured patches must cover at least $\frac{1}{4}$, but no more than $\frac{1}{2}$ of the body. (colour $\geq \frac{1}{4} \leq \frac{1}{2}$)

Patches to be clear, even and well distributed.

Face patched with colour and white.



VAN (Page revised February 2011)

A predominantly white cat with colour patches on head and coloured tail.

Small coloured patches elsewhere acceptable. Chest and stomach must be white.





Cat Federation of Southern Africa

Standard of Points

PATCHED SELF COLOURS

<u>COLOUR</u>	<u>COAT</u>	<u>NOSE LEATHER</u>	<u>PADS</u>
BLACK	Black & White	Black or Dark Brown and/or Pink	Black or Dark Brown and/or Pink
BLUE	Blue & White	Blue-grey and/or Pink	Blue-grey and/or Pink
CHOCOLATE	Chocolate & White	Chocolate or Cinnamon and/or Pink	Chocolate or Cinnamon and/or Pink
LILAC	Faded Lilac & White	Faded Lilac and/or Pink	Faded Lilac and/or Pink
CINNAMON	Warm Cinnamon & White	Cinnamon and/or Pink	Cinnamon and/or Pink
CARAMEL	Brownish-grey & White	Pinkish-grey and/or Pink	Pinkish-grey and/or Pink
FAWN	Warm Rosy Mushroom & White	Pinkish-fawn and/or Pink	Pinkish-fawn and/or Pink
RED	Red & White	Pink	Pink
CREAM	Cream & White	Pink	Pink

PATCHED TABBY COLOURS

<u>COLOUR</u>	<u>COAT</u>	<u>NOSE LEATHER</u>	<u>PADS</u>
BLACK TABBY	Black Tabby & White	Brick-red outlined with Black and/or Pink	Black or Dark Brown and/or Pink
BLUE TABBY	Blue Tabby & White	Old Rose outlined with Blue and/or Pink	Blue-grey and/or Pink
CHOCOLATE TABBY	Chocolate Tabby & White	Cinnamon outlined with Chocolate and/or Pink	Chocolate or Cinnamon and/or Pink
LILAC TABBY	Faded Lilac Tabby & White	Pink outlined with Faded Lilac and/or Pink	Faded Lilac and/or Pink
CINNAMON TABBY	Warm Cinnamon Tabby & White	Pink outlined with Cinnamon and/or Pink	Cinnamon and/or Pink
CARAMEL TABBY	Brownish-grey Tabby & White	Pink outlined with Caramel and/or Pink	Caramel and/or Pink
FAWN TABBY	Warm Rosy Mushroom Tabby & White	Pink outlined with Fawn and/or Pink	Fawn and/or Pink
RED TABBY	Red Tabby & White	Pink	Pink
CREAM TABBY	Cream Tabby & White	Pink	Pink

PATCHED TORTIE TABBY COLOURS

<u>COLOUR</u>	<u>COAT</u>	<u>NOSE LEATHER</u>	<u>PADS</u>
BLACK TORTIE TABBY	Black Tortie Tabby & White	Brick-red outlined with Black and/or Pink	Black or Dark Brown and/or Pink
BLUE TORTIE TABBY	Blue Tortie Tabby & White	Old Rose outlined with Blue and/or Pink	Blue-grey and/or Pink
CHOCOLATE TORTIE TABBY	Chocolate Tortie Tabby & White	Cinnamon outlined with Chocolate and/or Pink	Chocolate or Cinnamon and/or Pink
LILAC TORTIE TABBY	Lilac Tortie Tabby & White	Pink outlined with Faded Lilac and/or Pink	Faded Lilac and/or Pink
CINNAMON TORTIE TABBY	Cinnamon Tortie Tabby & White	Pink outlined with Cinnamon and/or Pink	Cinnamon and/or Pink
CARAMEL TORTIE TABBY	Caramel Tortie Tabby & White	Pink outlined with Caramel and/or Pink	Caramel and/or Pink
FAWN TORTIE TABBY	Fawn Tortie Tabby & White	Pink outlined with Fawn and/or Pink	Fawn and/or Pink

PATCHED SILVER TABBY

Ground colour pale silver.

Markings as for corresponding non-silver tabby variety.

Nose Leather as for corresponding non-silver tabby variety.

Pads as for corresponding non-silver tabby variety.

COLOURS: Black, Blue, Chocolate, Lilac, Red, Cream, Cinnamon, Caramel, Fawn

Black Tortie, Blue Tortie, Chocolate Tortie, Lilac Tortie, Cinnamon Tortie, Caramel Tortie, Fawn Tortie

PATCHED SMOKE /SHADED /SHELL

Coat colour same colour as for variety without white patched with white

Nose leather as for corresponding variety without white or pink

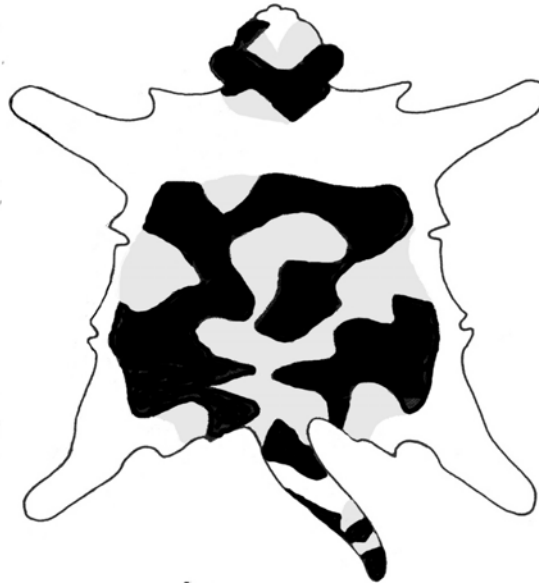
Pads as for corresponding variety without white or pink

COLOURS : Black, Blue, Chocolate, Lilac, Red, Cream, Cinnamon, Caramel, Fawn

Black Tortie, Blue Tortie, Chocolate Tortie, Lilac Tortie, Cinnamon Tortie, Caramel Tortie, Fawn Tortie

PATCHED TORTOISESHELL (CALICO) (Page revised February 2011)

Base colour patched with varying shades of red or cream and white. All three colours to be represented in clear even well distributed patches. In large areas of red or cream barring is permitted. At least $\frac{1}{2}$ must be coloured, but no more than $\frac{3}{4}$, the rest white. Face to be patched with colour and white.



PATCHED TORTOISESHELL (CALICO) COLOURS

<u>COLOUR</u>	<u>COAT</u>	<u>NOSE LEATHER</u>	<u>PADS</u>
BLACK	Black patched with varying shades of red and white.	Black or Dark Brown and/or Pink	Black or Dark Brown and or Pink
BLUE	Blue patched with varying shades of cream and white.	Blue-grey and/or Pink	Blue-grey and/or Pink
CHOCOLATE	Chocolate patched with varying shades of red and white.	Chocolate or Cinnamon and/or Pink	Chocolate or Cinnamon and/or Pink
LILAC	Faded Lilac patched with varying shades of cream and white.	Faded Lilac and/or Pink	Faded Lilac and/or Pink
CINNAMON	Cinnamon patched with varying shades of red and white.	Cinnamon and/or Pink	Cinnamon and/or Pink
CARAMEL	Caramel patched with varying shades of cream and white.	Caramel and/or Pink	Caramel and/or Pink
FAWN	Fawn patched with varying shades of cream and white.	Fawn and/or Pink	Fawn and/or Pink

SILVER

SMOKE

A smoke is a cat of contrast. The coat gives the appearance of a solid coloured cat, but when the fur is parted the white undercoat is revealed. Ground colour ash white with approximately two thirds (2/3) of the tips shading to the appropriate colour



Darker points must be defined on back, head, legs, feet and tail. Ruff, sides, flanks, underparts and ear tufts pale silver. Undercoat as white as possible.

A smoke cat without tabby markings is preferred.

<u>COLOUR</u>	<u>COAT</u>	<u>NOSE LEATHER</u>	<u>PADS</u>
BLACK	Black tipped	Black or Dark Brown	Black or Dark Brown
BLUE	Blue-grey tipped	Blue-grey	Blue-grey
CHOCOLATE	Chocolate tipped	Chocolate	Cinnamon to Chocolate
LILAC	Lilac tipped	Faded Lilac	Lavender
RED	Red tipped	Pink	Pink
CREAM	Cream tipped	Pink	Pink
CINNAMON	Cinnamon tipped	Cinnamon	Cinnamon
CARAMEL	Caramel tipped	Pinkish-grey	Pinkish-grey
FAWN	Warm beige fawn tipped	Pinkish-fawn	Pinkish-fawn

SMOKE TORTIE

Ground colour as ash white as possible, tips shading to appropriate colour patched or mingled with varying shades of red or cream.

With or without facial blaze

Undercoat as white as possible, ruff, ear tufts, flanks and underparts white

<u>COLOUR</u>	<u>COAT</u>	<u>NOSE LEATHER</u>	<u>PADS</u>
BLACK	Tipping Black and Red	Black or Dark Brown and/or Pink	Black or Dark Brown and/or Pink
BLUE	Tipping Blue and Cream	Blue and/or Pink	Blue and/or Pink
CHOCOLATE	Tipping Chocolate and Red	Chocolate and/or Pink	Chocolate and/or Pink
LILAC	Tipping Lilac and Cream	Faded Lilac and/or Pink	Lilac and/or Pink
CINNAMON	Tipping Cinnamon and Red	Cinnamon Brown and/or Pink	Cinnamon and/or Pink
CARAMEL	Tipping Caramel and Cream	Pinkish-grey and/or Pink	Pinkish-grey and/or Pink
FAWN	Tipping Warm Fawn and Cream	Pinkish-fawn and/or Pink	Pinkish-fawn and/or Pink

SHADED / SHELL

Tipping as even as possible.

Coat on head, ears, back, flanks and upperside of tail tipped with colour.

Chin, ear tufts, chest and stomach, inside of legs and underside of tail without tipping.

Undercoat white

Eyes and nose leather outlined with colour of tipping.

Faults: Uneven tipping.

All tabby markings

Brown or yellowish tinges in coat



Cat Federation of Southern Africa

Standard of Points

SHADED

Coat evenly shaded with the appropriate colour giving an overall effect of a mantle.
Approximately one third of hair shaft to be coloured from tip



Deepest colour confined to mask, along back and on legs and feet
Legs shaded with colour

SHELL

Coat evenly tipped with the appropriate colour to give the characteristic sparkling appearance
Only the extreme tip of hair shafts, approximately 1/8, are coloured.



Legs may be very slightly shaded with tipping

<u>COLOUR</u>	<u>COAT</u>	<u>NOSE LEATHER</u>	<u>PADS</u>
BLACK	Black tipped	Brick Red	Black or Dark Brown
BLUE	Blue-grey tipped	Old Rose	Blue-grey
CHOCOLATE	Chocolate tipped	Chocolate	Cinnamon to Chocolate
LILAC	Lilac tipped	Faded Lilac	Lavender
RED	Red tipped	Pink	Pink
CREAM	Cream tipped	Pink	Pink
CINNAMON	Cinnamon tipped	Cinnamon-brown	Cinnamon
CARAMEL	Brownish-grey tipped	Pinkish-grey	Pinkish-grey
FAWN	Warm beige fawn tipped	Pinkish-fawn	Pinkish-fawn

Tortie Shaded / Shell description as for smoke.

Colours: Black, Blue, Chocolate, Lilac, Cinnamon, Caramel, Fawn

GOLDEN

SHADED

COAT	Undercoat varies from apricot to gold with seal brown or black tipping on head, back, flanks and tail. General tipping effect much darker than a chinchilla. Legs may be shaded, back of legs from paws to hock solid brown or black. Tipping on tail heavier than body tipping.
EYES	Green or Blue-green, outlined with Seal-brown or Black.
NOSE LEATHER	Brick-red outlined with Seal-brown or Black.
PADS	Seal-brown or Black.
FAULTS	Barring on body and legs in adults. White chin Coat too pale or grey in tone Grey undercoat

SHELL

COAT	Undercoat light apricot evenly tipped with seal-brown or black to give a sparkling appearance.
-------------	--

All other details as for Golden Shaded

HIMALAYAN POINTED

SELF

Points (Mask, Ears, Legs, Feet, Tail) dense and matching in colour, showing clear contrast between points and body colour.

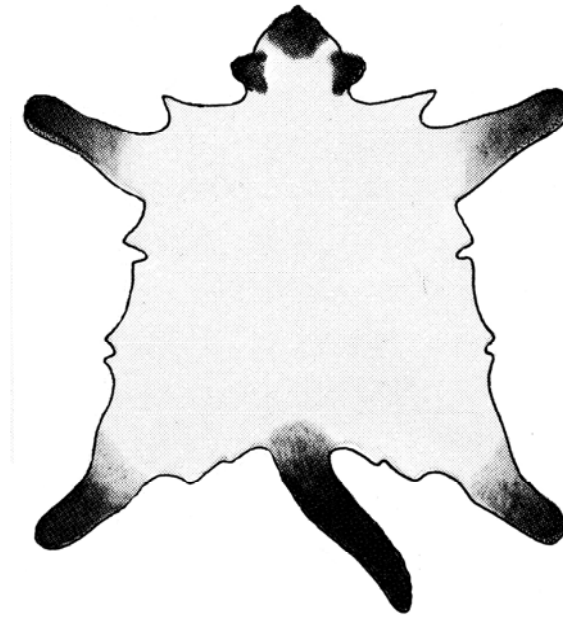
Mask must not extend over the entire head and is connected to the ears by tracings of colour.

Shading on the body harmonizing with the point colour permissible

Note: A deeper body colour is allowed in older cats.

Belly spot undesirable

Eye Colour: Clear Blue



POINTED COLOURS

EYE COLOUR – CLEAR BLUE

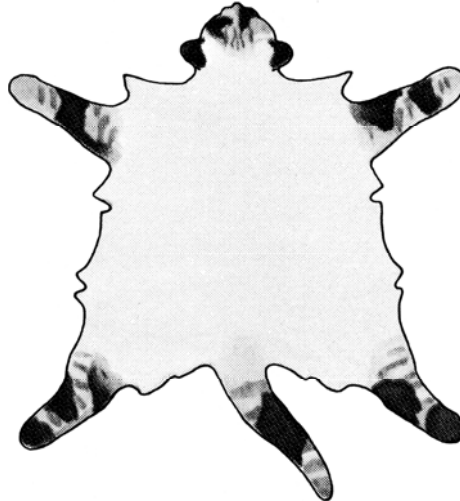
<u>COLOUR</u>	<u>BODY COLOUR</u>	<u>POINTS</u>	<u>NOSE LEATHER / PADS</u>
SEAL	Cream or pale warm fawn. Grey shades a fault.	Dense seal-brown	Dark seal-brown
BLUE	Bluish-white, cold in tone. Warm fawn tones a fault.	Blue-grey, without brownish tinges	Blue-grey
CHOCOLATE	Ivory	Chocolate. Legs may be paler than other points.	Chocolate or Cinnamon.
LILAC	Off-white (Magnolia).	Lilac with a slight pinkish tone.	Faded Lilac
RED	Off-white. Shading on body and legs may be apricot. <i>Allowance should be made for barring on points and freckling on mature cats.</i>	Bright warm orange.	Pink
CREAM	Off-white. <i>Allowance should be made for barring on points and freckling on mature cats.</i>	Cream. Legs and feet may be paler.	Pink
CINNAMON	Ivory, shading to tone with points.	Warm cinnamon-brown. Legs may be paler.	Cinnamon-brown
FAWN	Off-white (Magnolia)	Warm pale rosy mushroom. Legs may be paler.	Pinkish fawn
CARAMEL	Off-white (Magnolia)	Brownish-grey. Legs may be paler.	Pinkish grey

TORTIE POINT

Points patched or intermingled with varying shades of red and cream. Body shading to harmonize with point colours.

Points need not be evenly broken but each point must show some break in colour.

Blaze may be present.



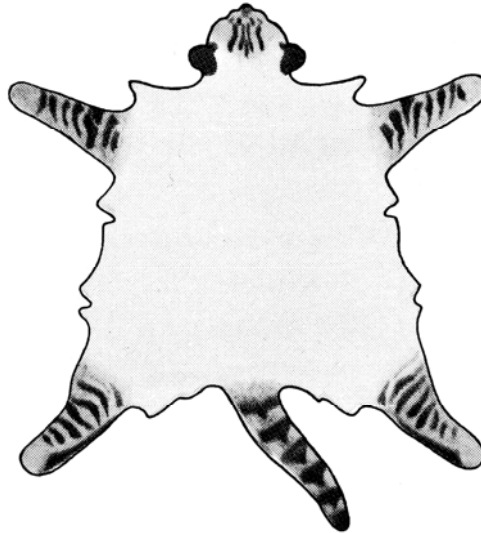
TORTIE POINT COLOURS

EYES – CLEAR BLUE

<u>COLOUR</u>	<u>BODY COLOUR</u>	<u>POINTS</u>	<u>NOSE LEATHER / PADS</u>
SEAL	Beige shading to fawn.	Seal with red	Seal and/or Pink
BLUE	Bluish-white.	Blue-grey with cream	Blue and/or Pink
CHOCOLATE	Ivory	Chocolate with red.	Chocolate and/or Pink
LILAC	Off-white (Magnolia).	Faded Lilac with cream	Faded Lilac and/or Pink
CINNAMON	Ivory	Warm cinnamon-brown with red.	Cinnamon-brown and/or Pink
FAWN	Off-white (Magnolia)	Warm pale rosy mushroom with cream.	Pinkish fawn and/or Pink
CARAMEL	Off-white (Magnolia)	Brownish-grey with cream.	Pinkish grey and/or Pink

TABBY POINT

MASK	"M" on forehead. Spectacles around eyes. Spotted whisker pads.
EARS	Solid colour with thumbprint.
BODY	Shading to tone with points.
LEGS	Broken stripes on all legs. Solid colour on back feet.
TAIL	Ringed, ending in a solid tip.



TABBY POINT COLOURS

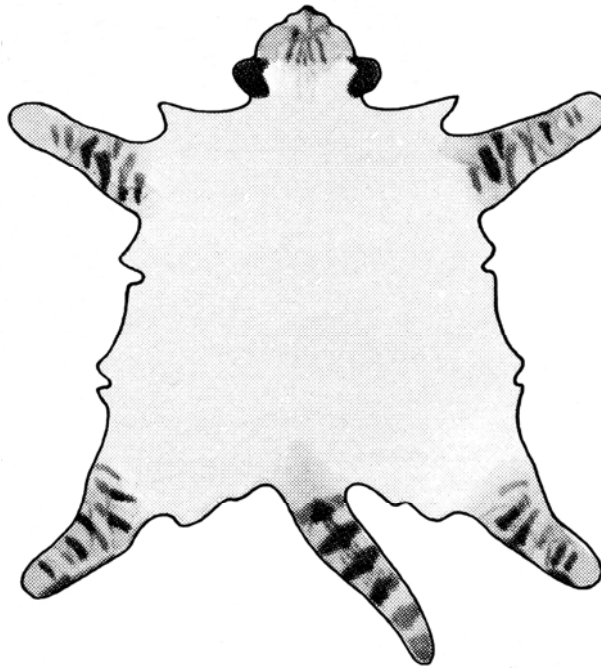
EYE COLOUR – CLEAR BLUE

<u>COLOUR</u>	<u>BODY COLOUR</u>	<u>POINTS</u>	<u>NOSE LEATHER</u>	<u>PADS</u>
SEAL	Cream	Dark Seal tabby	Brick-red outlined with seal.	Dark seal-brown
BLUE	Bluish-white	Blue-grey tabby	Old rose outlined with blue or blue-grey	Blue-grey
CHOCOLATE	Ivory	Chocolate tabby	Cinnamon-pink outlined with Chocolate	Chocolate or Cinnamon
LILAC	Off-white (Magnolia)	Lilac tabby	Lavender outlined with lilac	Faded Lilac
RED	Off-white.	Warm orange tabby.	Pink	Pink
CREAM	Off-white.	Cream tabby	Pink	Pink
CINNAMON	Ivory	Warm cinnamon tabby	Cinnamon-brown or Pink outlined with cinnamon-brown	Cinnamon-brown and/or Pink
FAWN	Off-white (Magnolia)	Warm rosy mushroom tabby	Pinkish fawn or Pink outlined with Pinkish-fawn	Pinkish-fawn and /or Pink
CARAMEL	Off-white (Magnolia)	Brownish-grey tabby	Pinkish grey or Pink outlined with Pinkish-grey	Pinkish-grey and/or Pink

TORTIE TABBY POINT

As for Tabby Point except for ears and points which are mottled/patched with red/cream.

COLOURS: Seal, Blue, Chocolate, Lilac, Cinnamon, Fawn, Caramel



CLASSIC TABBY (Page revised February 2011)

PATTERN

On the appropriate base colour is a "dark" and clearly defined pattern with good contrast without ticked hairs (brindling).

"M" on the forehead. An unbroken line runs back from the outer corner of the eye (tracings). Spiral on the cheeks. Thumb print on the ears. Unbroken necklaces on chest.

Vertical lines over the back of the head extend to the shoulder markings, which are in the shape of a butterfly.

Vertical line down spine from the butterfly to the base of the tail, with two parallel lines on each side. These three lines are clearly separated from each other by the ground colour. On each flank are large whorls in the colour of the ground colour encircled by one or more unbroken darker lines. Markings should be identical on both sides.

A double row of dark spots (buttons) on chest and stomach. Legs are evenly barred. The back of the feet in the dark colour.

The tail is evenly ringed and ends in a solid dark tip.

Faults: White chin or any white markings.

Indistinct or incorrect markings.

Light coloured tip of tail.

Blurred rings, broken necklaces or rings broken on top of tail.

Grey roots undesirable.



MACKEREL TABBY (Page revised February 2011)

PATTERN

On the appropriate base colour is a dark and clearly defined pattern with a good contrast and without ticked hairs (brindling).

“M” on forehead. Spiral on cheeks. Thumb print on ears. Unbroken necklaces on chest.

An unbroken spine line runs from the head over the back to the base of the tail. Numerous narrow dark lines run vertically down the body from the spine line to the stomach. These lines to be clearly separated by the ground colour. The pattern should be even on both sides. A double row of dark spots (buttons) on the chest and stomach.

Legs evenly ringed. Back of feet in dark colour.

Tail evenly ringed and ends in a solid dark tip.

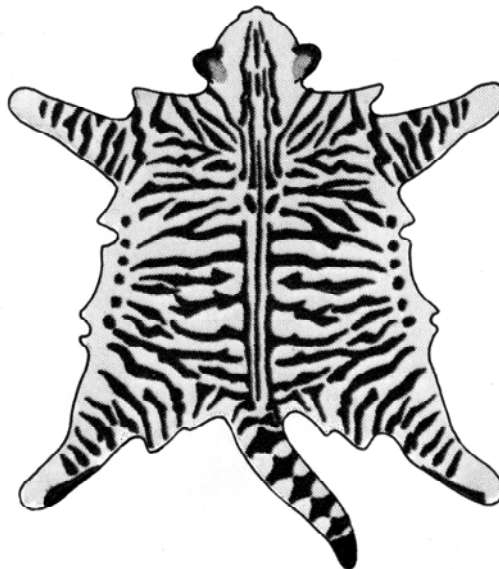
Faults: White chin or any white markings.

Indistinct or incorrect markings.

Light coloured tip of tail.

Blurred rings, broken necklaces or rings broken on top of tail.

Grey roots undesirable.



SPOTTED TABBY

PATTERN

On the appropriate base colour is a clear pattern of numerous well defined round or oval "dark" spots with good contrast and without ticked hairs (brindling). The spots should be of uniform shape, the more numerous the better, they are as important as the colour.

Scarab markings on the head with lines running between the ears and breaking into spots on the lower neck and shoulders. Thumb print on ears. Pencillings on the cheeks. Whisker pads spotted. Broken necklaces on chest.

Spots should be spread on the shoulders and over the body down to the legs. A slight spine line permitted. Stomach covered by clearly defined spots.

Legs evenly ringed and/or spotted. Back of feet in dark colour.

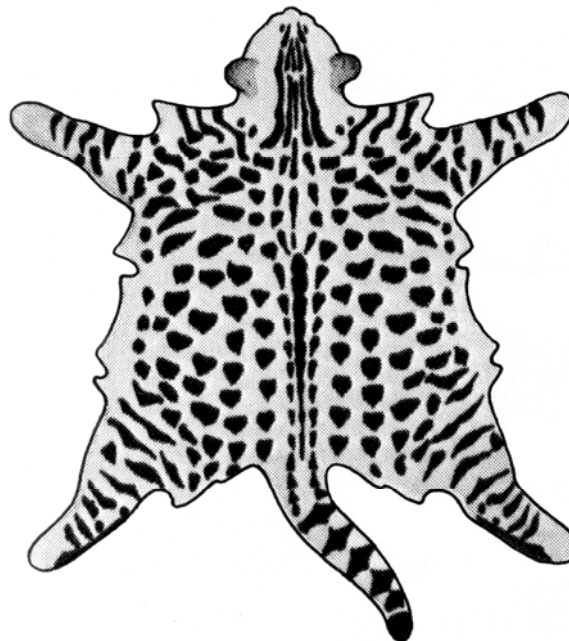
Tail evenly ringed and ends in a solid dark tip.

Faults: White, anywhere other than lips and lower jaw.

Spots elongated, resembling broken stripes.

Incorrect spotting pattern i.e. spots on one side and broken stripes on the other.

Solid spine line in adults.



TICKED TABBY

PATTERN

Body and extremities show pronounced ticking. The body is free from any markings. Tabby markings on face and forehead.

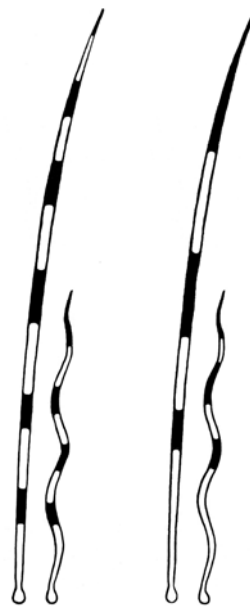
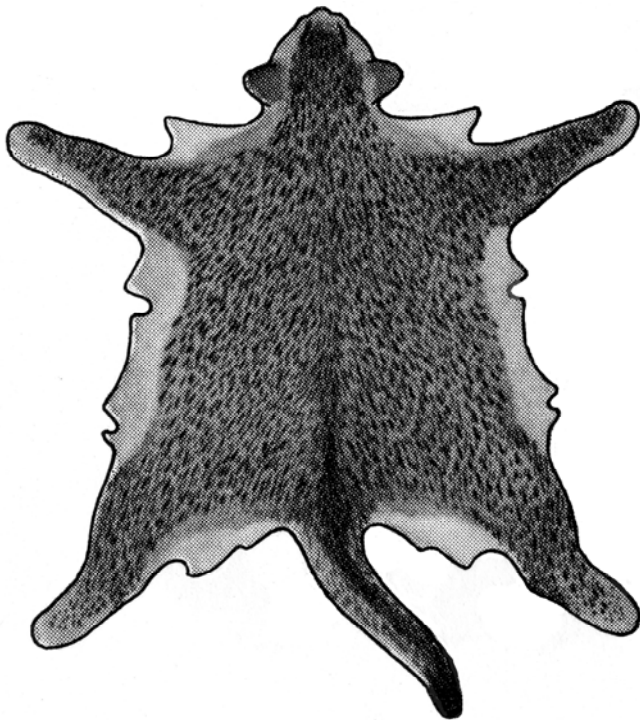
Thumb prints on ears. One or two necklaces – broken or unbroken.

Darker spine line. Fine, distinct stripes on legs. Back of feet in the “dark” colour.

The tail is evenly ringed and ends in a solid dark tip.

Faults: White chin

Light coloured tail tip.





Cat Federation of Southern Africa

Standard of Points

TABBY COLOURS

SOLID

<u>COLOUR</u>	<u>COAT</u>	<u>NOSE LEATHER</u>	<u>PADS</u>
BLACK	Ground colour coppery brown. Markings dense black.	Brick-red outlined with black	Black or dark brown.
BLUE	Ground colour ivory. Markings deep blue.	Old rose outlined with blue	Blue-grey
CHOCOLATE	Ground colour pale chocolate. Markings chocolate brown.	Cinnamon-pink outlined with chocolate	Cinnamon to chocolate
LILAC	Ground colour pale beige. Markings lilac.	Pink outlined with lilac	Faded lilac
RED	Ground colour pale red. Markings deep red.	Pink outlined with red	Pink
CREAM	Ground colour pale cream. Markings deeper shade of cream.	Pink	Pink
CINNAMON	Ground colour apricot. Markings warm cinnamon.	Pink outlined with cinnamon-brown	Pinkish brown
FAWN	Ground colour dull pale beige. Markings beige/fawn.	Pink outlined with fawn	Pink
CARAMEL	Ground colour cool toned beige. Markings brownish grey.	Pink outlined with caramel	Pink

TORTIE TABBY COLOURS

<u>COLOUR</u>	<u>COAT</u>	<u>NOSE LEATHER</u>	<u>PADS</u>
BLACK	Ground colour any shade of true brown. Markings dense black patched or mingled with varying shades of red.	Brick-red outlined with black and/or Pink	Dark brown and/or Pink
BLUE	Ground colour ivory. Markings blue-grey patched or mingled with varying shades of cream.	Blue or old rose outlined with blue and/or Pink	Blue-grey and/or Pink
CHOCOLATE	Ground colour chocolate brown. Markings chocolate brown patched or mingled with varying shades of red.	Cinnamon-pink outlined with chocolate and/or Pink	Chocolate and/or Pink
LILAC	Ground colour pale beige. Markings lilac patched or mingled with varying shades of cream.	Pink outlined with lilac and/or Pink	Faded lilac and/or Pink
CINNAMON	Ground colour apricot. Markings warm cinnamon patched or mingled with varying shades of red.	Pink outlined with cinnamon and/or Pink	Cinnamon and/or Pink
FAWN	Ground colour dull beige. Markings beige/fawn patched or mingled with varying shades of cream.	Pink outlined with fawn and/or Pink	Fawn and/or Pink
CARAMEL	Ground colour cool toned beige. Markings brownish grey patched or mingled with varying shades of cream.	Pink outlined with caramel and/or Pink	Caramel and/or Pink

SILVER TABBY

Ground colour pale silver.

Markings as for corresponding non-silver tabby variety.

Nose Leather as for corresponding non-silver tabby variety.

Pads as for corresponding non-silver tabby variety.

COLOURS: Black, Blue, Chocolate, Lilac, Red, Cream, Cinnamon, Caramel, Fawn

Black Tortie, Blue Tortie, Chocolate Tortie, Lilac Tortie, Cinnamon Tortie, Caramel Tortie, Fawn Tortie

GOLDEN TABBY

Ground colour warm coppery brown.

Markings seal brown or black.

Nose Leather – Brick red outlined with seal brown or Black

Pads – Seal brown or Black

Eyes – Green or Blue-green outlined with seal or black.



Cat Federation of Southern Africa

Standard of Points

COLOUR IDENTIFICATION CODES

<u>COLOUR</u>	<u>CODE</u>
WHITE: Blue Eyed	01
Orange Eyed / Gold Eyed	02
Odd Eyed	03
Green Eyed	04
BLACK / BROWN / SEAL / RUDDY	05
BLUE	06
CREAM	07
RED	08
CHOCOLATE	10
FAWN / BEIGE	11
LILAC	12
CINNAMON / SORREL	13
CARAMEL	14
BLACK TORTOISESHELL	36
BLUE TORTOISESHELL	37
CHOCOLATE TORTOISESHELL	38
FAWN TORTOISESHELL	39
LILAC TORTOISESHELL	40
CINNAMON TORTOISESHELL	41
CARAMEL TORTOISESHELL	42
UNREGISTERED COLOUR	X

EYE COLOUR – to be marked after the colour, only white cats (when not specified as above), vans, harlequins bi-colours.

a – blue

b – orange

c – odd-eyed :*One eye blue the other as required per pattern/colour description of the Breed without white.*

d – green

e – deep blue (like Himalayan pointed)